

QUIK FOOT™

VERSATILE FLASHED BASE PLATE

INSTALLATION GUIDE

REVISION:04/09/21

VERSION: WIP_V1.0

QUIKFOOT

INSTALLATION GUIDE



EcoFasten
For Installers. By Installers.

CLICKING THE PAGE NAME WILL TAKE YOU TO THAT PAGE

<u>TABLE OF CONTENTS</u>	<u>PAGE 01</u>
<u>FEATURES & BENEFITS</u>	<u>PAGE 02</u>
<u>COMPONENTS</u>	<u>PAGE 03</u>
<u>INSTALLATION</u>	<u>PAGE 04</u>
<u>LINE DRAWINGS</u>	<u>PAGE 06</u>
<u>SPECIFICATIONS</u>	<u>PAGE 12</u>

QUIKFOOT

INSTALLATION GUIDE



EcoFasten
For Installers. By Installers.



QUIK FOOT

QuikFoot includes a base plate and uses two self-drilling attachment points for optimal pullout value. When paired with an EcoFasten compression bracket, the QuikFoot flashing creates a watertight seal that will maintain the roof's integrity.

FEATURES

- Patented Watertight Technology
- Installs without removing shingles
- Can be used on slate roofs
- Two self-drilling screws provide optimal strength
- Compatible with a variety of compression brackets

FEATURES + BENEFITS

QUIKFOOT

INSTALLATION GUIDE



EcoFasten
For Installers. By Installers.

SYSTEM COMPONENTS



**1. SCL-101-3 ANOD BLACK
COMPRESSION BRACKET
(OTHER OPTIONS AVAILABLE)**

4. EPDM SEALING WASHER

2. 5/16" SERRATED FLANGE NUT

5. QF-FLASH-BLACK 812 FLASHING

3. 5/16" EPDM BONDED SEALING WASHER

6. #15-13 SELF DRILLING FASTENER (2X)

7. QF BASE AL-1.25

COMPONENTS

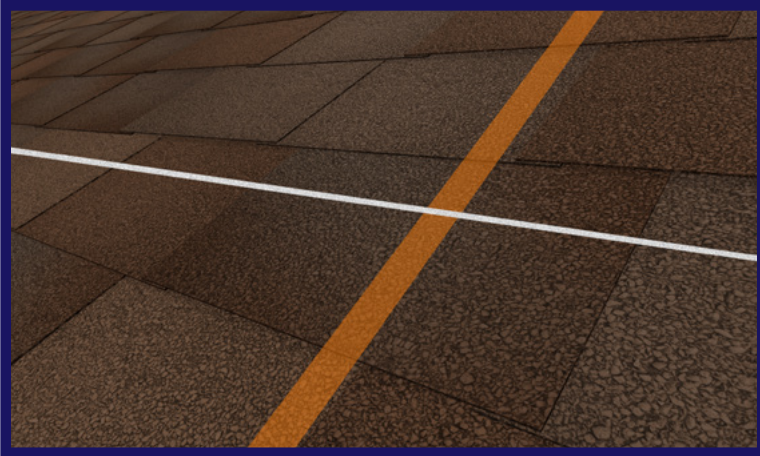
QUIKFOOT

INSTALLATION GUIDE

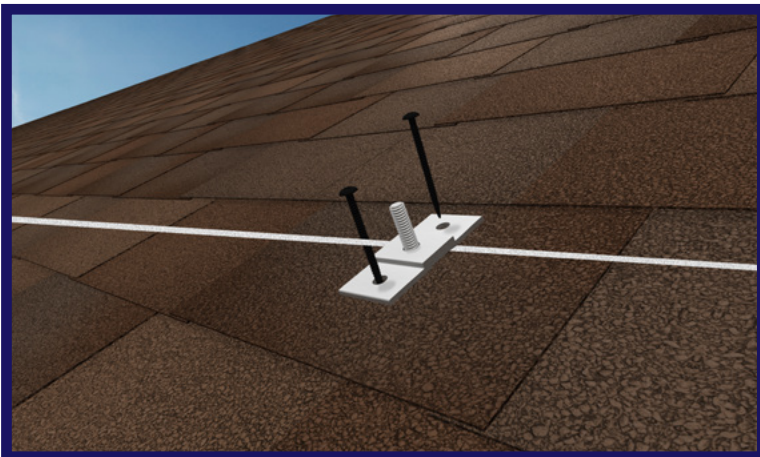


EcoFasten
For Installers. By Installers.

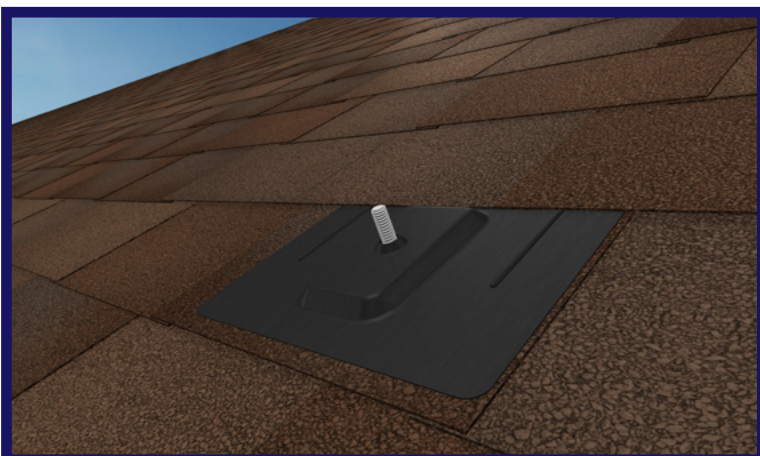
INSTALLING QUIKFOOT



Snap horizontal chalk lines to mark the position of each row. Find the rafters and mark the position for installation.



Place the QF Base over the rafter vertically and screw down using two fasteners. The stud on the base plate should line up with the chalk line.



Slide the flashing over the base plate and under the row of shingles directly above the base plate. (If the course of shingles is elevated by the flashings, notching of the shingles is acceptable)

INSTALLATION

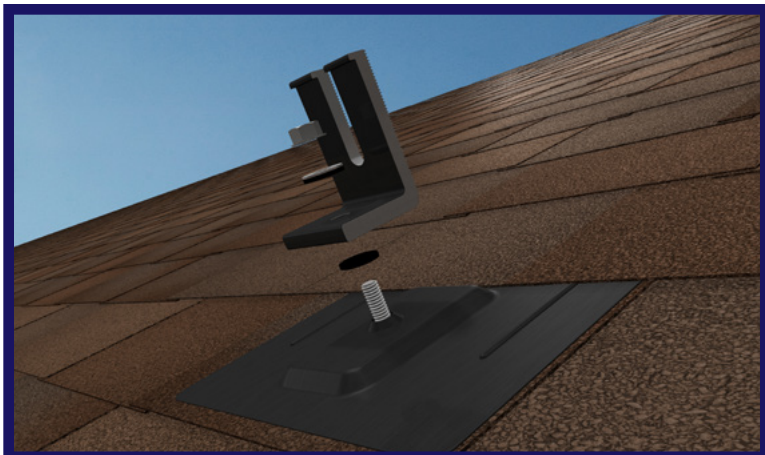
QUIKFOOT

INSTALLATION GUIDE

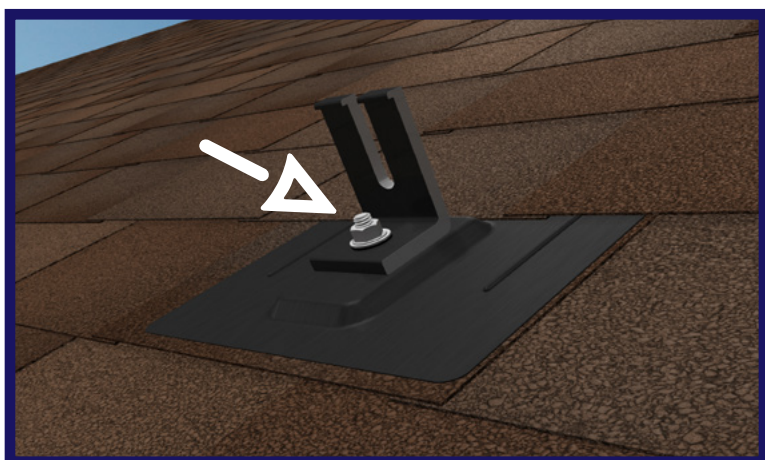


EcoFasten
For Installers. By Installers.

INSTALLING QUIKFOOT



Place the bare EPDM washer over the stud, pushing it all the way down. Then place an EcoFasten compression bracket over the stud and bare EPDM washer, followed by the bonded sealing washer with the rubber side facing down.



Secure the bracket to the stud using the serrated flange nut and torque to 50-inch pounds.

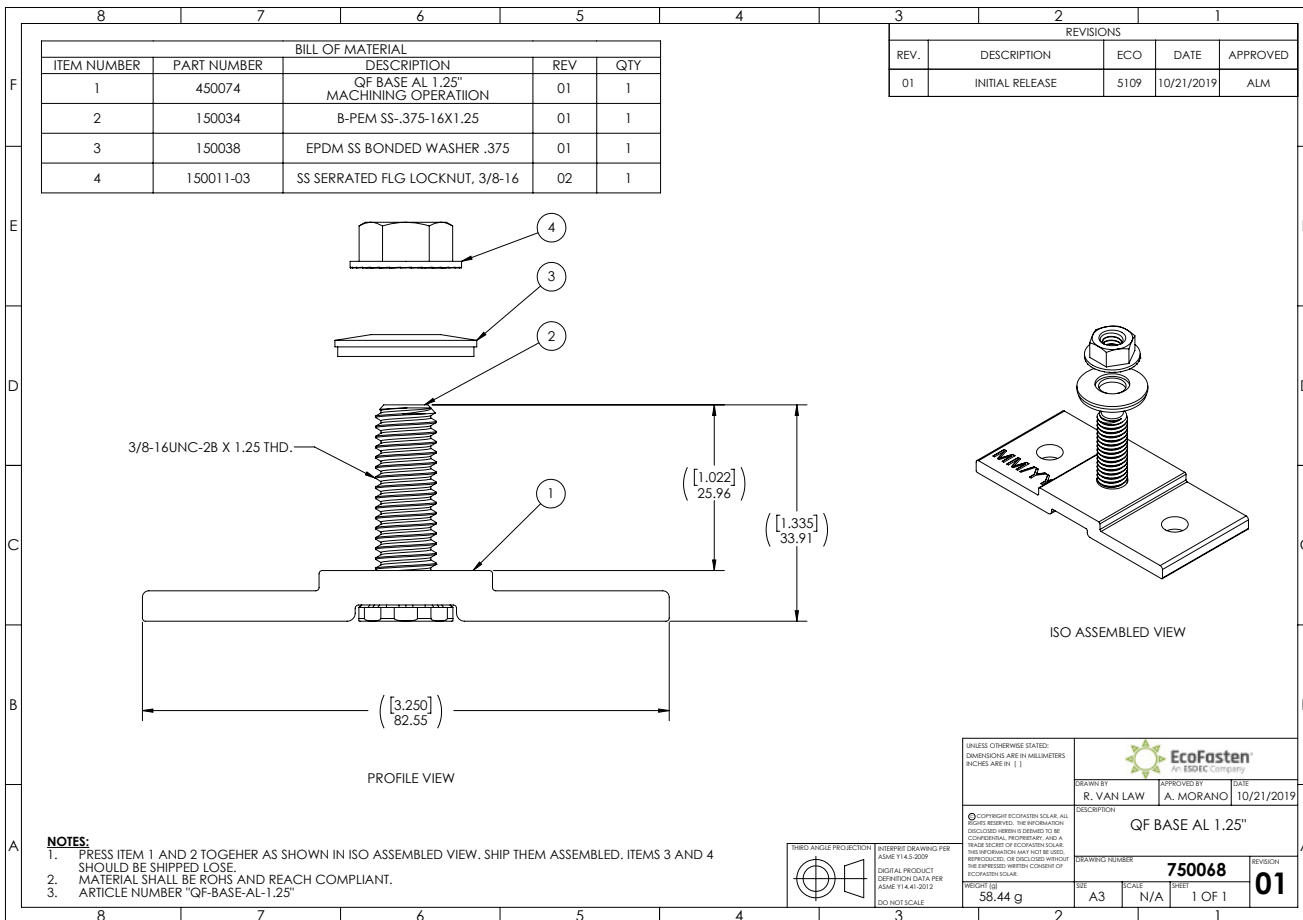
INSTALLATION

QUIKFOOT INSTALLATION GUIDE



EcoFasten
For Installers. By Installers.

CUT SHEET: QF-BASE-AL-1.25



LINE DRAWINGS

QUIKFOOT INSTALLATION GUIDE



CUT SHEET: QF-FLASH-BLACK-812

Top view dimensions: $([12.00])$ 304.80, $([8.00])$ 203.20

Section A-A SCALE 1 : 2

ISO VIEW

REVISIONS				
REV.	DESCRIPTION	ECO	DATE	APPROVED
01	INITIAL RELEASE	5125	12/2/2019	ALM

CONFIGURATION TABLE			
PART NUMBER	ITEM NO. 1 PART NUMBER	MATERIAL DESCRIPTION	ARTICLE NUMBER
750085-01	250018-01	0.50 GALVALUME PRE-PAINT BLACK ONE SIDE	QF-FLASH-GAL-BLACK-812
750085-02	250018-02	0.50 GALVALUME MLL FINISH	QF-FLASH-GAL-MILL-812
750085-03	250018-03	0.80 ALUMINUM PRE-PAINT BLACK ONE SIDE	QF-FLASH-BLACK-812
750085-04	250018-04	0.80 ALUMINUM MLL FINISH	QF-FLASH-MILL-812

BILL OF MATERIAL				
ITEM NO.	PART NUMBER	DESCRIPTION	REV	QTY.
1	SEE CONFIG TABLE	QF FLASHING	01	1
2	350017	EPDM SEALING WASHER	A	1

SECTION A-A SCALE 1 : 2

ISO VIEW

UNLESS OTHERWISE STATED: DIMENSIONS ARE IN MILLIMETERS INCHES ARE IN ()

© COPYRIGHT ECOFASTEN SOLAR. ALL RIGHTS RESERVED. THE INFORMATION DISCLOSED HEREIN IS DEEMED TO BE CONFIDENTIAL, PROPRIETARY AND A TRADE SECRET OF ECOFASTEN SOLAR. THE INFORMATION MAY NOT BE REPRODUCED, OR DISCLOSED WITHOUT THE EXPRESS WRITTEN CONSENT OF ECOFASTEN SOLAR.

THIRD ANGLE PROJECTION INTERPRET DRAWING PER ASME Y14.5-2009 DIGITAL PRODUCT DELIVERED DATA P32 ASME Y14.41-2012 (DO NOT SCALE)

DRAWN BY: R. VAN LAW
APPROVED BY: A. MORANO
DATE: 12/2/2019

DESCRIPTION: QF-812 ASSEMBLY, ALL CONFIGURATIONS

DRAWING NUMBER: 750085
REVISION: 01

SIZE: A3 SCALE: N/A SHEET: 1 OF 1

NOTES:
1. SHIP ASSEMBLY AS SHOWN IN ASSEMBLED VIEW.
2. MATERIAL SHALL BE ROHS AND REACH COMPLIANT.

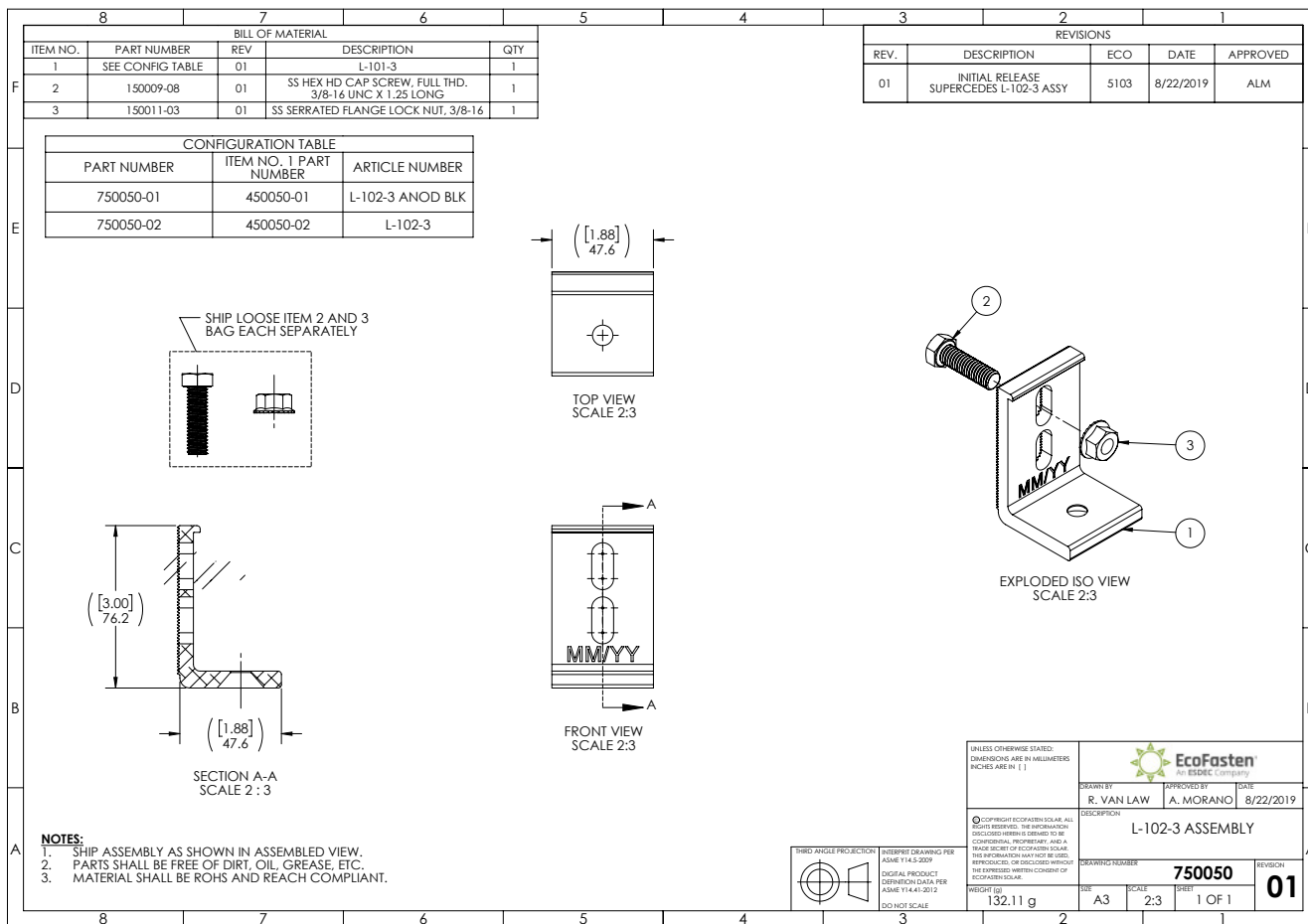
LINE DRAWINGS

QUIKFOOT INSTALLATION GUIDE



EcoFasten
For Installers. By Installers.

CUT SHEET: BRACKET OPTION L-102-3-ANOD BLK



LINE DRAWINGS

QUIKFOOT INSTALLATION GUIDE



EcoFasten
For Installers. By Installers.

CUT SHEET: BRACKET OPTION L-102-6

BILL OF MATERIAL					REVISIONS				
ITEM NUMBER	PART NUMBER	DESCRIPTION	REV	QTY	REV.	DESCRIPTION	ECO	DATE	APPROVED
1	SEE CONFIG TABLE	L-102-6	01	1	01	INITIAL RELEASE	5110	10/21/2019	ALM
2	150009-08	SS HEX HEAD CAP SCREW, FULL THREAD 3/8-16 UNC	01	1					
3	150011-03	SS SERRATED FLANGE LOCKNUT	02	1					

CONFIGURATION TABLE		
PART NUMBER	ITEM NO 1 PART NUMBER	ARTICLE NUMBER
750067-01	450082-01	L-102-6 BLK
750067-02	450082-02	L-102-6

TOP VIEW

PROFILE ASSEMBLED VIEW

BAG ITEMS 2 AND 3 SEPARATELY

ISO VIEW

NOTES:

- SHIP ASSEMBLY AS SHOWN IN ISO VIEW.
- MATERIAL SHALL BE ROHS AND REACH COMPLIANT.

THIRD ANGLE PROJECTION

INTERPRET DRAWING PER ASME Y14.5-2009

DIGITAL PRODUCT DEFINITION DATA PER ASME Y14.41-2012

DO NOT SCALE

UNLESS OTHERWISE STATED, DIMENSIONS ARE IN MILLIMETERS (INCHES ARE IN [])

© COPYRIGHT ECOFASTEN SOLAR. ALL RIGHTS RESERVED. THE INFORMATION DISCLOSED HEREIN IS OWNED BY ECOFASTEN SOLAR AND IS A TRADE SECRET OF ECOFASTEN SOLAR. THIS INFORMATION HAS NOT BE USED, REPRODUCED, OR DISCLOSED WITHOUT THE EXPRESS WRITTEN CONSENT OF ECOFASTEN SOLAR.

REGISTERED BY: 305.11 g

DATE: A3 SCALE: N/A 1 OF 1

EcoFasten
An ESOTEC Company

DRAWN BY: R. VAN LAW
APPROVED BY: A. MORANO
DATE: 10/21/2019

DESCRIPTION: L-102-6 ASSEMBLY

DRAWING NUMBER: 750067
REVISION: 01

LINE DRAWINGS

QUIKFOOT INSTALLATION GUIDE



CUT SHEET: SCL-101-3

BILL OF MATERIAL				REVISIONS					
ITEM NO.	PART NUMBER	REV	DESCRIPTION	QTY	REV.	DESCRIPTION	ECO	DATE	APPROVED
1	SEE CONFIG TABLE	01	SCL-101-3	1	01	INITIAL RELEASE SUPERCEDES SCL-101-3 ASSY	5103	8/22/2019	ALM
2	150009-08	01	SS HEX HD CAP SCREW, FULL THD. 3/8-16 UNC X 1.25 LONG	1					
3	150011-03	01	SS SERRATED FLANGE LOCK NUT, 3/8-16	1					

CONFIGURATION TABLE		
PART NUMBER	ITEM NO. 1 PART NUMBER	ARTICLE NUMBER
750049-01	450049-01	SCL-101-3 ANOD BLK
750049-02	450049-02	SCL-101-3

SHIP LOOSE ITEM 2 AND 3
BAG EACH SEPARATELY

TOP VIEW

EXPLODED ISO VIEW

SECTION A-A

FRONT VIEW

NOTES:

- SHIP ASSEMBLY AS SHOWN IN ASSEMBLED VIEW.
- PARTS SHALL BE FREE OF DIRT, OIL, GREASE, ETC.
- MATERIAL SHALL BE ROHS AND REACH COMPLIANT.

THIRD ANGLE PROJECTION	INTERPRET DRAWING PER ASME Y14.5-2009	DIGITAL PRODUCT DEFINITION DATA PER ASME Y14.41-2012	DO NOT SCALE	NET WEIGHT: 132.11 g	
DRAWN BY: R. VAN LAW APPROVED BY: A. MORANO DATE: 8/22/2019			DESCRIPTION: SCL-101-3 ASSEMBLY		
DRAWING NUMBER: 750049		REVISION: 01		SCALE: N/A	
SHEET: 1 OF 1					

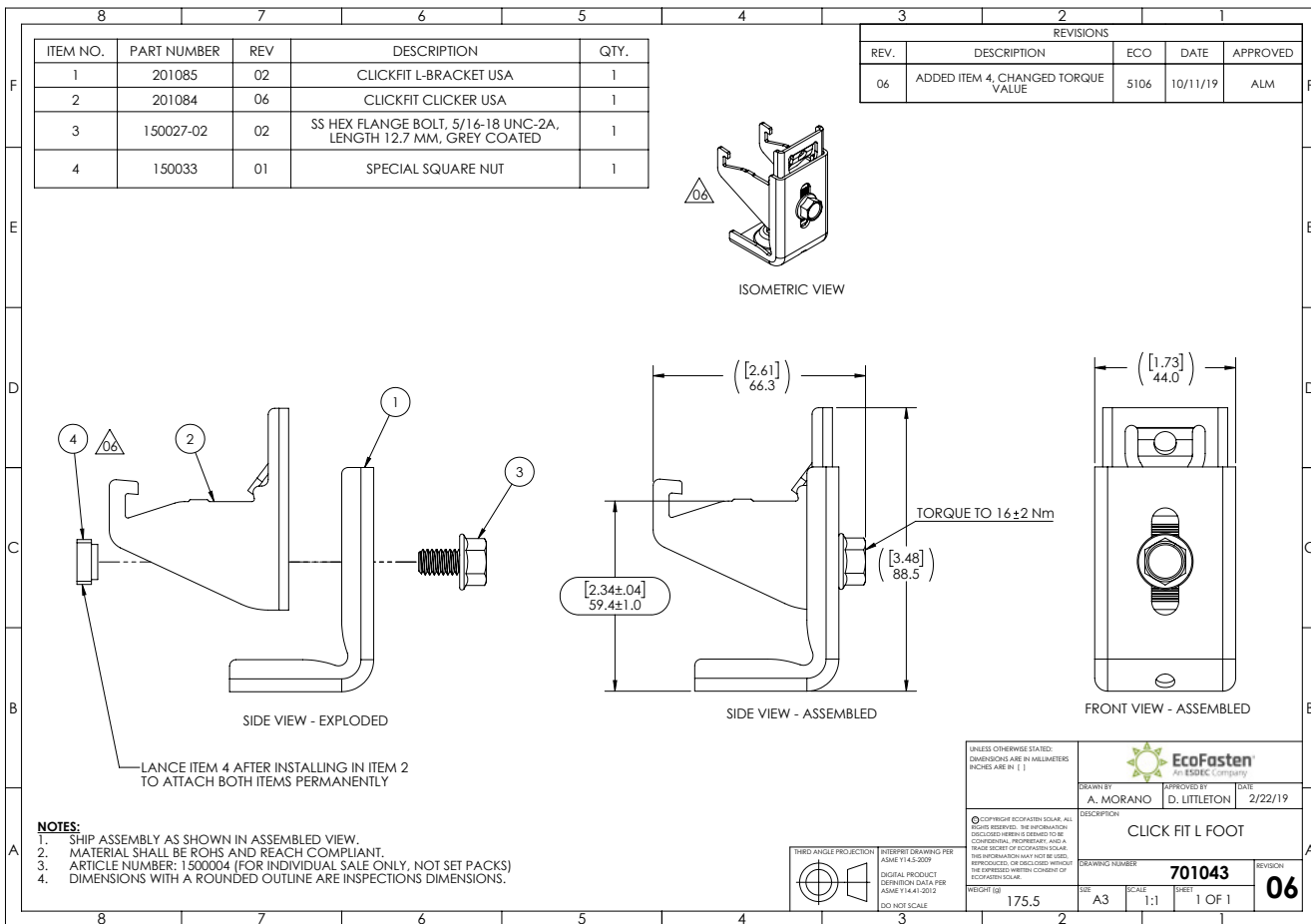
LINE DRAWINGS

QUIKFOOT INSTALLATION GUIDE



EcoFasten
For Installers. By Installers.

CUT SHEET: 1500004



LINE DRAWINGS

QUIKFOOT

INSTALLATION GUIDE



EcoFasten
For Installers. By Installers.

SYSTEM COMPONENTS

1. **QF Base AL 1.25 Base Plate Bracket:**

Consists of (1) stainless steel base plate attachment bracket with (1) pre-installed stainless steel stud, (1) stainless steel serrated flange nut and (1) EPDM sealing washer. Base is made out of 6000 series aluminum.

2. **QF-812 - Flashing:**

Black finish (Kynar painted) .032 gauge aluminum, embossed.

3. **Fastener:**

Self-drilling #15 roofing screws are available from Ecofasten in 2", 3" and 4" lengths. Third party fasteners that have been approved by the engineer of record are permissible.

4. **Recommended Sealant:**

If required by roof manufacturer, sealant shall be roof manufacturer approved.

DELIVERY / STORAGE / HANDLING

Inspect material upon delivery. Notify manufacturer within 24 hours of any missing or defective items. Keep material dry, covered and off the ground until installed.

PATENTS

Visit www.efpatents.com for patent information.

QUIKFOOT

INSTALLATION GUIDE



EcoFasten
For Installers. By Installers.

DESIGN REQUIREMENTS

1. Bracket spacing to be recommended by project engineer.
2. Install a minimum of two fasteners per base plate.
3. It is important to design new structures or assess existing structures to make sure they withstand retained loads.

EXAMINATION

1. Substrate: Inspect structure on which brackets are to be installed and verify that it will withstand any additional loading that may be incurred.
2. Notify General Contractor of any deficiencies before installing EcoFasten Solar brackets.
3. Verify that roofing material has been installed correctly prior to installing solar attachment bracket.

INSTALLATION

Comply with architectural drawings and project engineer's recommendation for location of system. Comply with Manufacturer's written installation instructions for installation and layout.

SPECIFICATIONS